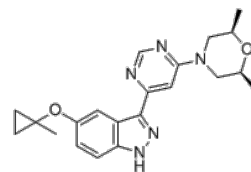


Product Name : MLi-2
Cat. No. : PC-21889
CAS No. : 1627091-47-7
Molecular Formula : C₂₁H₂₅N₅O₂
Molecular Weight : 379.46
Target : LRRK2
Solubility : 10 mM in DMSO



Biological Activity

MLi-2 is a potent, highly selective, orally available, brain-penetrant inhibitor of **LRRK2** with IC₅₀ of 0.76 nM, pSer935 LRRK2 IC₅₀ of 1.4 nM.

MLi-2 shows an IC₅₀ of 3.4 nM in a radioligand competition binding assay, > 95-fold selectivity for over 300 kinases in addition to a diverse panel of receptors and ion channels.

MLi-2 significantly reduces the ratio of phosphorylated Ser935 LRRK2 (pS935) to total LRRK2 in the mouse cortex in both single dose and 11-day in-diet studies.

MLi-2 significantly reduces pS935 in a dose dependent manner (1–100 mg/kg) 1 h post treatment in rats.

References

Scott JD, et al. *J Med Chem*. 2017 Apr 13;60(7):2983-2992.

Fell MJ, et al. *J Pharmacol Exp Ther*. 2015 Dec;355(3):397-409.

Volpicelli-Daley LA, et al. *J Neurosci*. 2016 Jul 13;36(28):7415-27.

Caution: Product has not been fully validated for medical applications. Lab Use Only!

E-mail: tech@probechem.com